

CheckerLok & PennyLok Installation Guide

Pre Installation:

✓ LOOSE LAY OR GLUE?

Tiles can be installed over any hard surface and in most situations will not require gluing.

However, we do recommend gluing the tiles in the following situations:

- Areas where heavy pallet trucks, forklifts and small turning circles are common.
- Areas that are in direct sunlight eg. shop fronts, south facing loading bays.

Adhesive can be purchased from us if required, please contact for price and availability on 01489 789944

✓ LAYING METHOD?

- STRAIGHT (fig. 1)
- BRICK (fig. 2)

Tiles can be laid using either of these 2 methods. We recommended using the brick method for situations as stated as above.

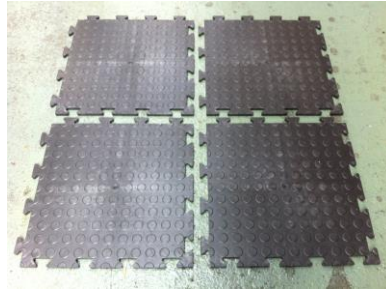


Fig.1

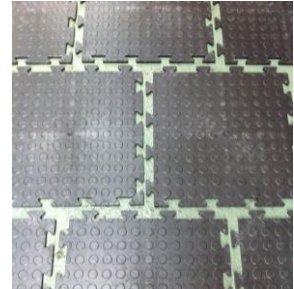


Fig.2

✓ TOOLS REQUIRED

- Non-marking rubber mallet or engineering hammer
- Spirit level or chalk line (if marking out the centre of the room)
- Guillotine / Stanley / utility knife with sharp blades (if small area with a few simple cuts)
- Electric jigsaw or disc cutter, use a wood blade (if a large number of cuts are required)

✓ ALLOW THE TILES TO ACCLIMATISE

Tiles are made from a recycled flexible PVC which expands and contracts depending upon the temperature. Installs best in temperatures above 10°C and below 30°C. We recommend leaving the tiles to adjust for 24 hrs, however if you are unable to wait, breakdown the pallets and leave a gap (for expansion) around the edges between the tiles and the fixed edge.

✓ CLEAN THE AREA

Thoroughly sweep or vacuum the floor to remove any dirt and loose debris. Fill in any large holes with a rapid set compound.



TIPS

- ✓ Identify the centre as your starting point. This will ensure the tiles are symmetrical around the edges where cuts are necessary.
- ✓ Create a template for difficult and complicated cuts.
- ✓ Use the arrow shaped corner (fig. 3) to make sure the tiles are laid out the same way round.

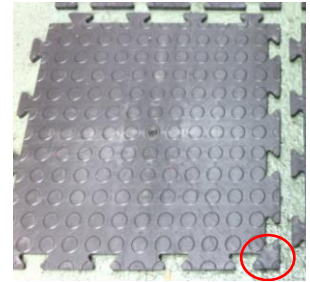


Fig.3

METHOD

1. Roughly lay out batches of tiles around your chosen starting point, ensuring the tiles are all the same way round.
2. Simply use your rubber mallet to gently tap the tiles together.

FITTING THE EDGES

1. Select and align the male or female ramped edge pieces to the male or female tile edges. You will need to offset the edges using the brick style method mentioned earlier or as shown in (fig.6).

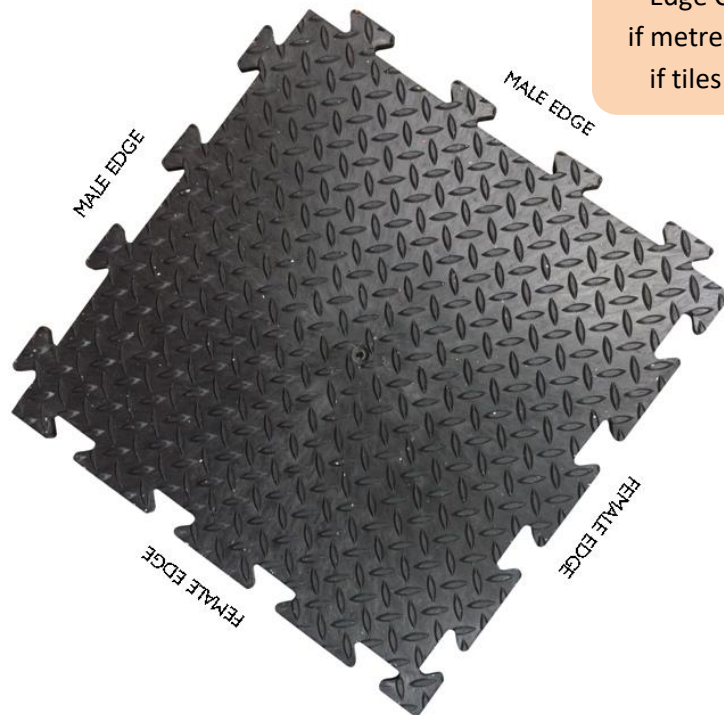


Fig.4

How to identify? (fig. 4)

Black Edge = Male Edge Piece

Yellow Edge = Female Edge Piece



Edge Calculator:
if metres = $m \times 2 + 1$
if tiles = $\text{tiles} + 1$



Flooring & Matting / Safety Surfacing / Noise Control / Mouldings & Extrusions / Seals & Gaskets / Hoses / Ground Protection / Sheeting / Sponge / Fendering

Managing Director: Richard Lynch

Directors: Jayne Keith and Rebekah Upson

Company registered in England and Wales No. 02336704

Registered Address: Solution Business Advisors, Unit 7, Firefly Road, Hamble Point Marina, Hamble, Southampton SO31 4JD

VAT Registration No. 522 1678 62



Certificate Number 5358

Units 16/17 Bottings Ind. Est., Hillsons Road,
Curdridge, Southampton SO30 2DY.

T +44 (0) 1489 789 944

F +44 (0) 1489 798 866

E sales@technix-rubber.com

W www.technix-rubber.com

Technix

Rubber & Plastics Ltd

2. Offset the edges using the brick style method mentioned earlier or see (fig.6). The edges are also used to make internal and external corners. Simply cut along the moulded in guideline (fig. 4) on the underside of each edge.

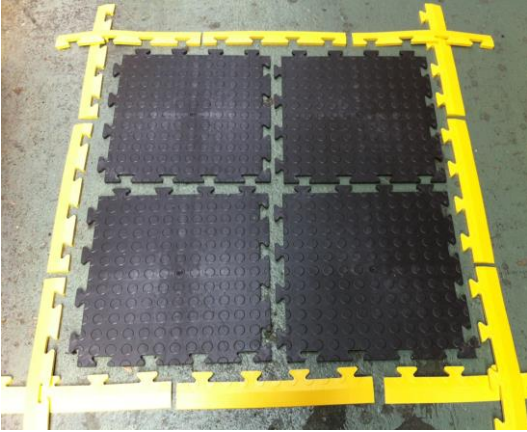


Fig.6

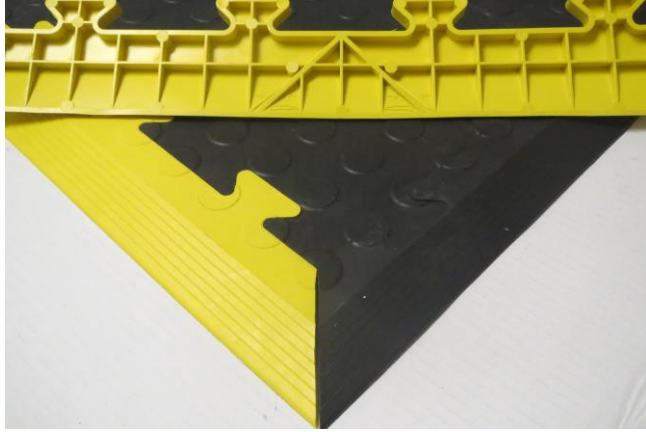


Fig.5

NOTES

STAINING – rubber tyres may stain the light coloured tiles. This is a result of a chemical reaction that occurs between the anti-oxidant that is used in some rubbers and the plasticizer used in vinyl. We recommend choosing our Black or Grey tiles if your application could be subject to staining. You could also consider the application of an anti-stain or varnish to avoid any staining to the tiles.

UV STABILITY – Our tiles (black only) are made from 100% recycled PVC material so we cannot determine the UV stability however we do know that PVC has good natural properties to cope with outdoor environments. We shall not be held responsible for any defects the may or may not occur. Our coloured tiles can be manufactured in a UV stable compound please enquire for a specific quote if this specification is required.

BATCH CONTROL – We are unable to guarantee 100% colour consistency between individual production batches. Each individual order will be supplied from a single batch but in the event that you need additional tiles or wish to extend the area we cannot guarantee subsequent orders will be supplied from the same batch.

CLEANING & MAINTENANCE

Our impervious surface means that it is also quick and easy to clean; damp mopping, machine or hand scrub. To enhance and maintain a varnish or sealer can be applied to give superior finish.



Flooring & Matting / Safety Surfacing / Noise Control / Mouldings & Extrusions / Seals & Gaskets / Hoses / Ground Protection / Sheeting / Sponge / Fendering

Managing Director: Richard Lynch

Directors: Jayne Keith and Rebekah Upson

Company registered in England and Wales No. 02336704

Registered Address: Solution Business Advisors, Unit 7, Firefly Road, Hamble Point Marina, Hamble, Southampton SO31 4JD

VAT Registration No. 522 1678 62



Certificate Number 5358